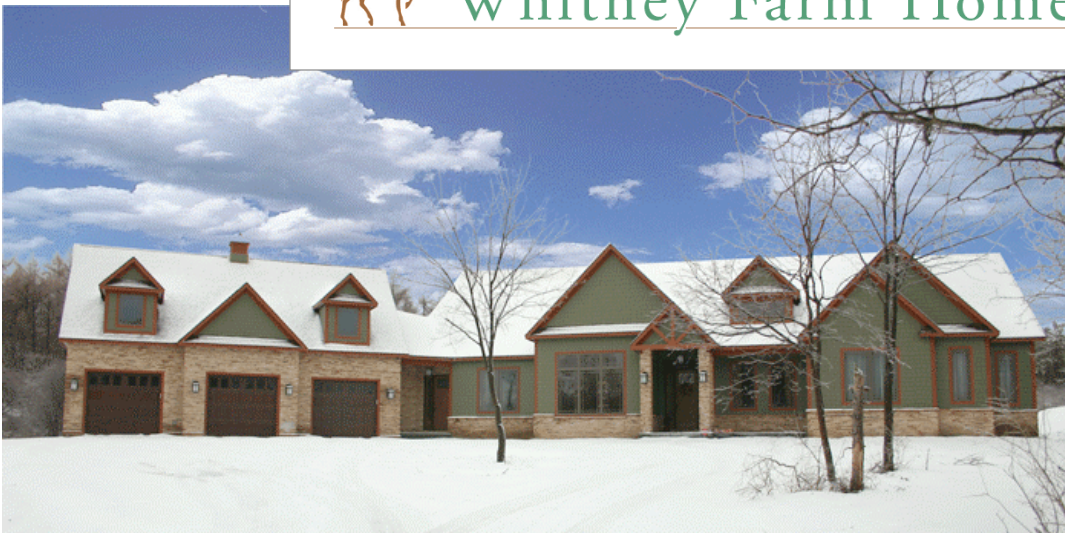


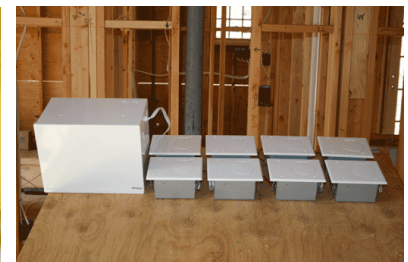
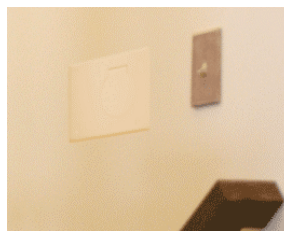


# Whitney Farm Homes



## A Unique Custom Home... A Unique Life-Safety Feature

Completed in January of 2008, this 6,500 square foot single family custom-built Art & Crafts home has many special features. Located in a rural area atop a mountain, power failures are frequent due to ice storms and heavy winds. For safe egress of the family during a power failure, the owners asked the design/developer to research and install the best available residential emergency lighting. Developed by Fire Chief Brian Corbett who leads teams in battling burning homes and commercial buildings on a regular basis, his vision was realized in an ADA-compliant, affordable, compact, concealed emergency light that can be installed in the wall or ceiling.



**Photo Above:** The eight residential SentryLight RM36 units utilizes the Remote Battery unit as the DC power source during a power failure.  
**Photos Left:** Placement on the stairs, children's room and hallway to front door provide safe egress.



When AC power is on, the internal battery is charging.



Upon AC power failure, the lamps deploy automatically.

## “Finally... serious residential emergency lighting!”

The perspective homeowners set out to build their dream home, and they were not willing to compromise on any features. From the rural site located just ten miles from a metropolitan area to the line details of the structure or the flooring materials and kitchen appliances, they had a clear idea of the mood they wanted to create: a comfortable haven from a fast-paced life where they can raise their family in safety. While their builder was well-versed in the standard safety features common in custom homes, he was not familiar with the concept of residential emergency lighting.

Upon finding the SentryLight website and reading about other residential installations, they then had to select which model to install. Of three SentryLight models, two are perfect for residential installations: the self contained battery unit: SC11, and the remote model: RM36. Both units are installable in walls or ceilings, and recommended placement along the path of egress is common sense... at the top of stairways, near the children's rooms, in hallways leading outside the house, and even the garage to manually operate the door are logical locations.

In order to make the lights totally blend into their surrounding, they were painted to blend into the wall coloring.

To find out more, send an email: [Brian@SentryLight.com](mailto:Brian@SentryLight.com) or call: (866) 494-4431.

