



Brian Corbett
Firefighter; Inventor
SentryLight President

SentryLight SC36
Vandal resistant, ADA-compliant.
Installation height: 36"

Invented by a firefighter...

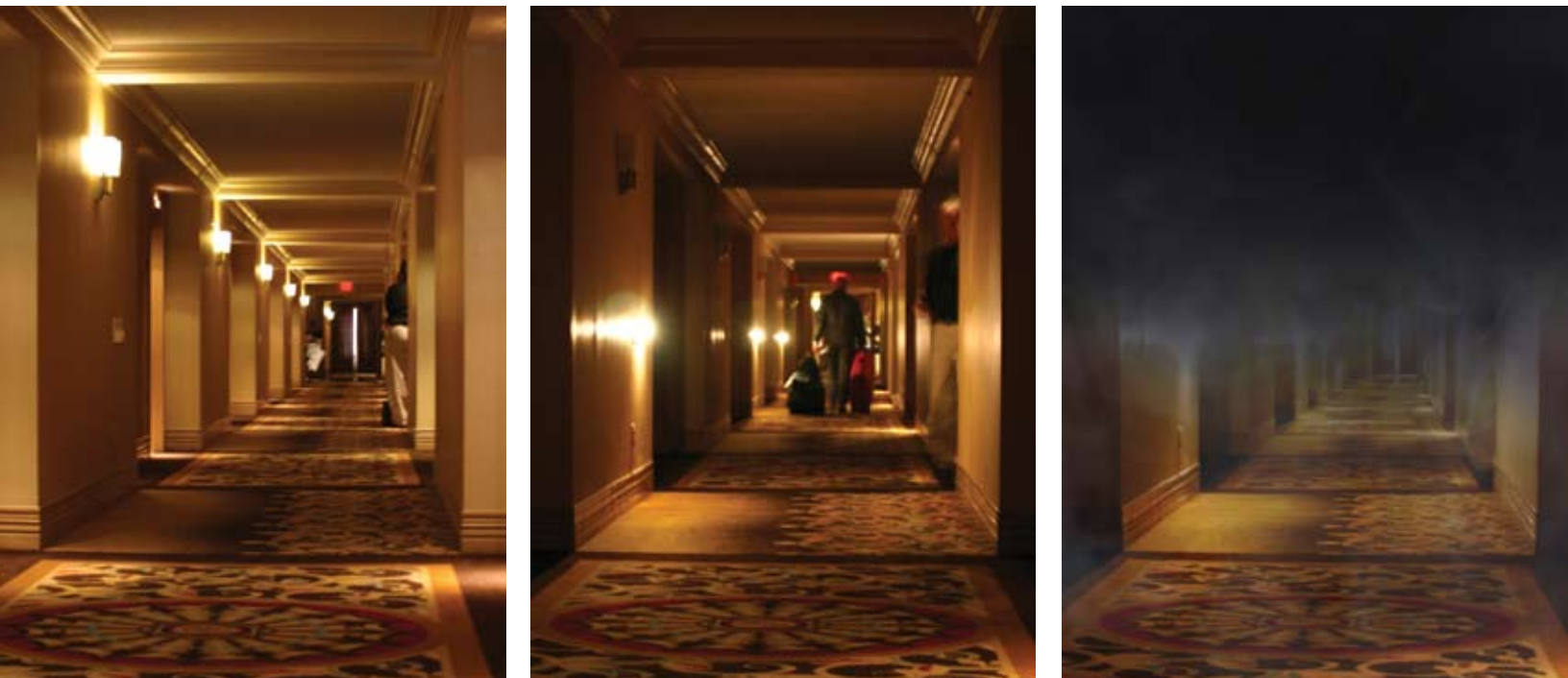
The lower-installation-height concealed emergency light that saves lives.

Commercial & Residential
2009 Product Guide

Sentry
Light™

The emergency light that saves lives

Placing emergency lighting lower on the wall delivers more footcandles on the floor where code requires and provides egress lighting for longer periods during a fire... more time to see the egress path out of a building, or even your home. Required by code in all commercial buildings, emergency lighting has been installed high on the wall, or in the ceiling. Some believe this is due to fire safety code requirements. It is not. Installation heights above 80 inches are required to reduce vandalism at lower heights. Firefighters have known that smoke banks down from the ceiling, rendering emergency light functionality near the ceiling vulnerable. Emergency lighting installed near the ceiling may last less than one minute due to the smoke from a fire. SentryLight, designed to be ADA-compliant and vandal resistant, overcomes these issues. To see a video case study, go to www.SentryLight.com.



Left: Hilton Hotel, normal lighting. Center: AC power off, the SentryLight SC36 installed at 36". Right: (simulation) During a fire, SentryLight continues to light the path.



Powered with the 9/11 Commission Report and expert knowledge, SentryLight committed to solve a particular problem during a fire: smoke banks down from the ceiling, obscuring conventional emergency lights installed in or near the ceiling. International building codes are just now addressing this with stricter requirements. SentryLight solves these concerns by placing more footcandles on the floor, and providing egress path lighting for a longer duration during a fire. For a video case study illustrating this issue during an actual fire, go to www.SentryLight.com, or go to www.YouTube.com and search SentryLight.

*“Emergency lighting installed near the ceiling fails quickly when obscured by rising smoke from a fire. Vandal resistant and ADA-compliant, I invented SentryLight to be installed at **any** height, even below the smoke. Providing more footcandles on the floor for a longer duration during a fire saves lives.”*

Brian Corbett
Firefighter, Inventor,
SentryLight President



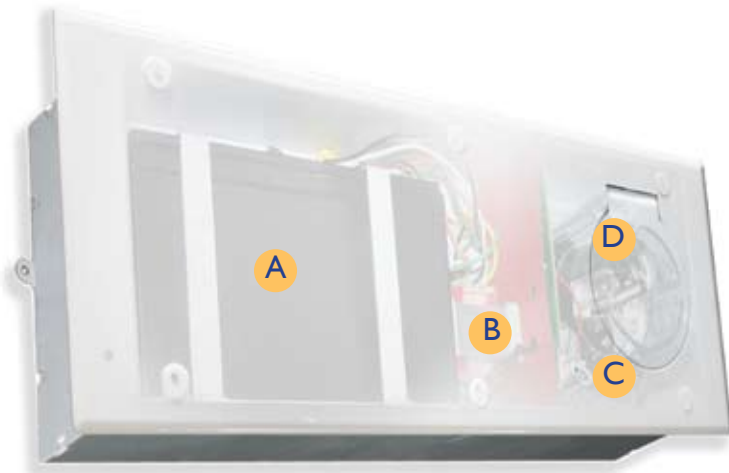
Sentry
Light™



Improved life safety

An innovative solution

ADA-compliant and vandal resistant, SentryLight's design is UL-924 approved for installation at *lower heights*, even below the smoke from a fire. The patented design places the battery, charger and lamps *inside the wall* until a power failure. In the SC36 (right), the 12V battery **A** is charged with a solid state trickle charger **B**. AC-power-detection circuitry triggers the 30-year-rated DC motor **C** to automatically rotate the stainless steel screw drive **D**, delivering the polycarbonate lens housing and activating two powerful 18 Watt, 10,000 hour Xenon lamps. With a high-impact polycarbonate cover plate, the internal components are protected, even at lower heights.



School Renovations

As America rebuilds its 50-year-old schools to bring them up to federally-mandated standards, safer solutions are being sought. In Upstate New York, the School Board, impressed with the lower installation heights impact on safety, resolved to make SentryLight emergency lighting the sole-source standard in the upcoming renovation of 36 schools.



Condos

When an exclusive condo in Manhattan sought emergency lighting that would work well with custom printed wallpaper, they had the coverplates of the SC36 painted to match. Installed at 42", the solution will provide bright illumination, even after smoke from a fire would block out conventional installation heights near the ceiling.



Life safety in the home

Required by code in commercial buildings, residential emergency lighting has waited for an attractive solution. Able to be painted and wall papered, SentryLight RM36 concealed emergency lighting is the first practical solution to automatically provide illumination during a power failure in the home... even in the children's room.



Life Care Communities

In Virginia, a prominent Life Care Community installed SentryLight emergency lighting *inside* of the residence. By adding incremental life safety measures, the residents and their families know that their safety is being carefully planned.



Hotels

Hotels seeking ways to increase their guest's safety are discovering that choosing the proper life-safety equipment makes a difference. The Christiania Hilton's Chief Engineer, Joe Strong, chose to install the SC36 at 3' for increased safety during an emergency.



Royal Academy of Arts



Museums

The Royal Academy of Arts, based on Piccadilly in London, was seeking world-class lighting solutions for their galleries. By selecting SentryLight SC36 concealed emergency lighting, interiors remained cleaner, and art... more visible.



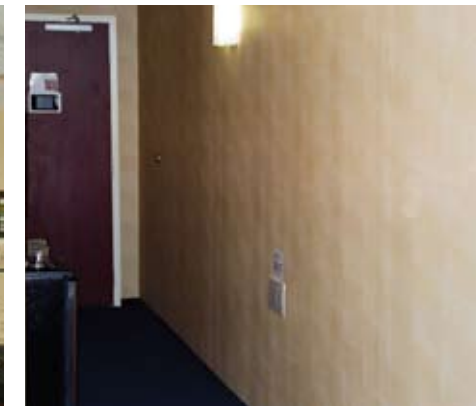
Office Buildings

The Terlogy Building needed a face lift, and affordable concealed emergency lights were selected.



Restaurants

Creating a clean design, SC36s installed in the ceiling brighten the way during an AC power failure.



Inside the Hotel Guest Room

The Marriott Hotel chain is testing in-room emergency lighting to provide additional safety for their guests.



NASA Space Station

After testing reliability, NASA selected the SC11 for the International Space Station Training Modules.



Invented by a firefighter. Concealed Emergency Lighting, automatically powers ON/OFF in an AC power Failure

Three SentryLight™ models designed to cover all of your emergency lighting needs.

SentryLight SC36



Powered by an internal 12V battery, two 18 Watt Xenon lamps (36 Watts) provide bright illumination for the most critical applications.

12 Volt Battery, 36 Watt Xenon emergency light
Automatically powered ON/OFF by Precision Lens Drive
Size: 14.3"L x 3.3"W x 5.4"H
Use: Retrofit and New Construction
Battery: Maintenance-free 12 Volt sealed lead calcium
Battery Charger: Solid state trickle charger
Illumination Duration: 120 minutes
Approvals: UL-924, CSA, NYC, ADA-Compliant
Installation Height: UL-approved for any height
Weight: 10.6 lbs.
AC Voltage: 120 or 277 VAC input (field selectable)
Application: All spaces requiring emergency lighting
Illumination: Two bright 18 Watt Xenon lamps (36 Watt total)
Coverplate: Impact resistant polycarbonate
Color: White. Customizable with paint or wallpaper
Testing: Recessed AC on/push-to-test LED
Accessory: Surface Mount Back Box: SentryLight item SM-SC36
Warranty: 3 year limited warranty (battery excluded)

SentryLight SC11



Powered by an internal 6V battery, two 5.5 Watt Xenon lamps (11 Watts) are perfect for residences, inside hotel and dorm rooms, and anywhere you need emergency lighting.

6 Volt Battery, 11 Watt Xenon emergency light
Automatically powered ON/OFF by Precision Lens Drive
Size: 9.8"L x 3.3"W x 5.4"H
Use: Light commercial/residential; Retrofit and New Construction
Battery: Maintenance-free 12 Volt sealed lead calcium
Battery Charger: Solid state trickle charger
Illumination Duration: 120 minutes
Approvals: UL-924, CSA, NYC, ADA-Compliant
Installation Height: UL-approved for any height
Weight: 5.5 lbs.
AC Voltage: 120 or 277 VAC (field selectable)
Application: All spaces where emergency lighting is desired
Illumination: Two 5.5 Watt Xenon lamps (11 Watt total)
Coverplate: Impact resistant polycarbonate
Color: White. Customizable with paint or wallpaper
Testing: Recessed AC on/push-to-test LED
Accessory: Surface Mount Back Box: SentryLight item SM-SC11
Warranty: 3 year limited warranty (battery excluded)

SentryLight RM36



Powered by a remote battery unit, this remote head has two 18 Watt Xenon lamps (36 Watts).

Remote Head, 36 Watt Xenon emergency light
Automatically powered ON/OFF by Precision Lens Drive
Size: 7"L x 3.3"W x 5.4"H
Use: New Construction; Easily retrofit in false ceiling
Battery: Requires external 12 Volt battery (SentryLight RBU unit)
Battery Charger: None; must be incorporated in external unit
Illumination Duration: 120 minutes
Approvals: UL-924, CSA, NYC, ADA-Compliant
Installation Height: UL-approved for any height
Weight: 3.3 lbs
AC Voltage: N/A; attach to remote battery using low-voltage wiring
Application: All spaces requiring emergency lighting
Illumination: Two bright 18 Watt Xenon lamps (36 Watt total)
Coverplate: Impact resistant polycarbonate
Color: White. Customizable with paint or wallpaper
Testing: N/A; testing occurs at Central Battery Unit
Accessory: Surface Mount Back Box: SentryLight item SM-RM36
Accessory: Central Battery Unit: RBU-18A or RBU-36A
Warranty: 3 year limited warranty (battery excluded)

Accessories:

SentryLight RBU-18A

Powers up to 6 RM36s

SentryLight RBU-36A

Powers up to 12 RM36s



Central battery and charger powers multiple Remote Heads (RM36).

Central Battery and charger for Remote Heads (RM36)
Size: 12.25"L x 3.62"W x 7.75"H
Use: Each 18 Amp/Hr battery powers up to 6 RM36s
Battery: 18 amp hour maintenance-free 12 Volt sealed lead calcium
Battery Charger: Solid state trickle charger
Illumination Duration: 120 minutes
Approvals: UL-924
Weight: 18A = 20.6 lbs; 36A = 33.2 lbs.
AC Voltage: 120 or 277 VAC (field selectable)
Application: Powers RM36s; All spaces requiring emergency lighting
Warranty: 3 year limited warranty (battery excluded)

SentryLight SM

Surface Mount Back Box
Three models available
(see models left to order)



Perfect for installation on masonry walls or anywhere where surface mount is preferred.

Surface Mount Back Box for all SentryLight models
Size: (Length same as luminaire) x 3.01"W x 8.63"H
Use: Perfect for surface mounts; angled for superior vandal resistance
Construction: 20 Gauge Steel, Powder coated
Color: White

To find a local sales rep: (866) 494-4431

Introducing the world's first concealed emergency light installable below the smoke that builds up during a fire.

Invented by a firefighter to improve life safety, SentryLight replaces conventional "bug eye" and expensive concealed designs with an affordable alternative. With the "uni-box" solution, installation takes just minutes, and changing a battery is simple.

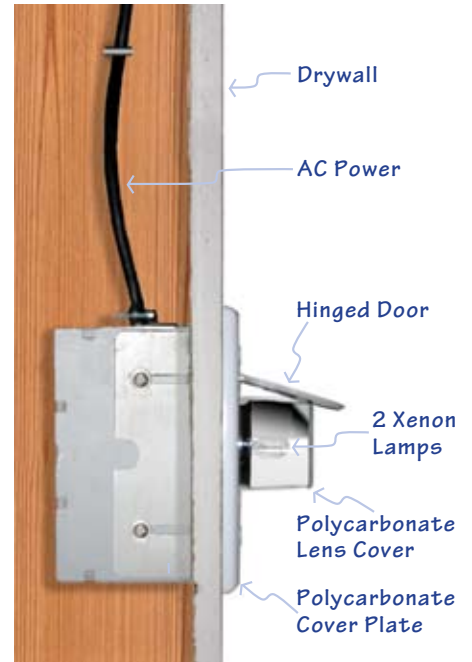
Patent Protected: US, International Patent No. 7,220,010



When AC power is ON, the integrated trickle charger keeps the battery fully charged. Lamps and circuitry are concealed behind a polycarbonate cover plate.



Upon AC power failure, the lens automatically extends through the hinged door and two Xenon lamps provide two hours of bright, even illumination.



Preferred by architects, engineers and lighting designers, SentryLights are installed in some of the finest locations.



SentryLight, Inc.
280 East Main Street, Suite 110
Newark, Delaware 19711

"Thank you for considering
SentryLight concealed
emergency lighting for
your next project."



Brian Corbett
Firefighter, Inventor,
SentryLight President